



Antibodies for Virus Research

Your Expertise, Our Antibodies, Accelerated Discovery.

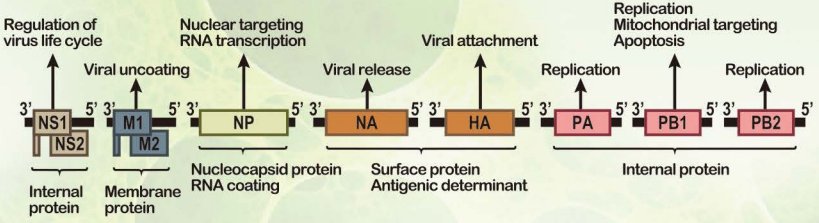
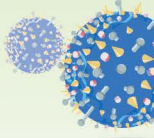
We are committed to the most stringent standards of product performance and are dedicated to the goal of accelerating your discovery in virus research.



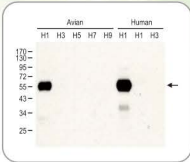
virus antibodies

www.genetex.com

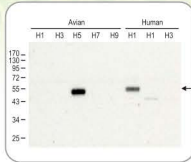
Influenza Virus



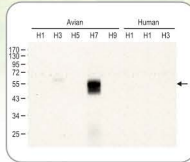
Influenza A Virus



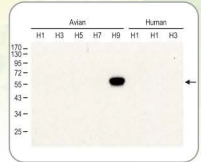
Influenza A virus H1N1 HA antibody (GTX127295)



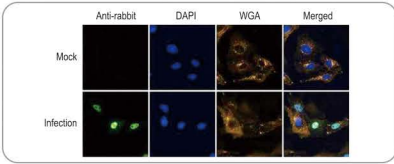
Avian Influenza A virus H5N3 HA antibody (GTX127299)



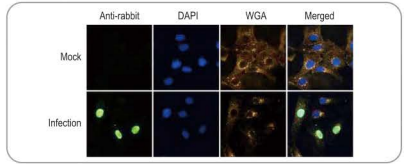
Influenza A virus H7N7 HA antibody (GTX127303)



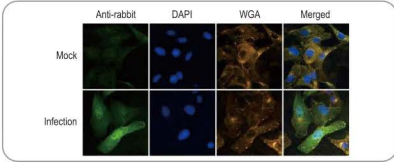
Influenza A virus H9N2 HA antibody (GTX127305)



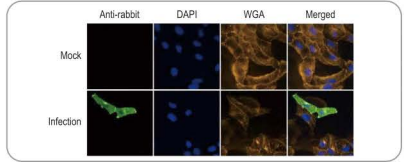
Influenza A virus NS1 antibody (GTX125990)



Influenza A virus NP antibody (GTX125989)

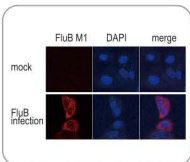


Influenza A virus PA antibody (GTX118991)

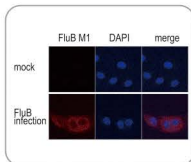


Influenza A virus M2 antibody (GTX125951)

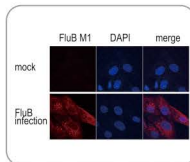
Influenza B Virus



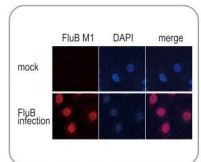
Influenza B Virus M antibody (GTX128537)



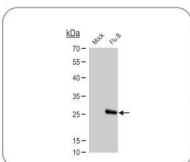
Influenza B Virus NA antibody (GTX128540)



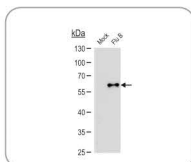
Influenza B Virus HA antibody (GTX128542)



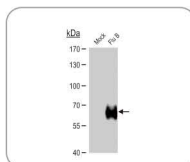
Influenza B Virus NP antibody (GTX128538)



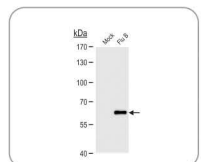
Influenza B Virus M antibody (GTX128536)



Influenza B Virus NP antibody (GTX629882)



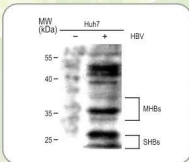
Influenza B Virus HA antibody (GTX128543)



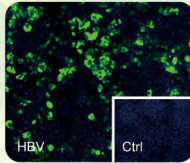
Influenza B Virus antibody (GTX128544)

Hepatitis B / Hepatitis C Viruses

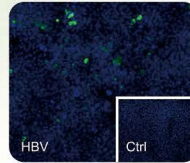
Hepatitis B Virus



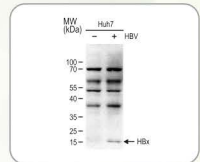
Hepatitis B surface antigen antibody (GTx29193)



Hepatitis B Presurface Antigen antibody [S26] (GTx41800)



Hepatitis B core antigen antibody [C1] (GTx40523)

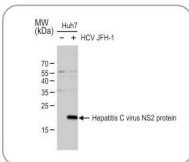
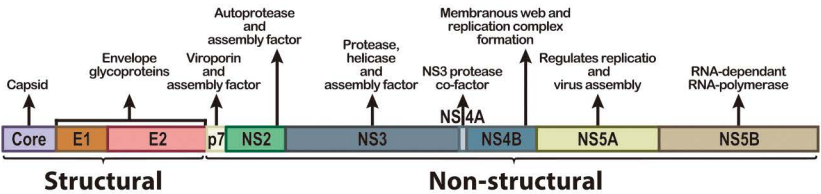


Hepatitis B Virus X Protein antibody [X36C] (GTx22741)

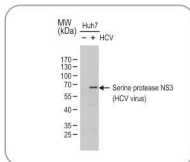
[Citation Support](#)

Cat. No.	Product name	Clonality	Applications
C GTX18686	Hepatitis B core antigen antibody [10E11]	Ms mAb	ELISA, ICC/IF, IHC, IP, WB
C GTX40523	Hepatitis B core antigen antibody [C1]	Ms mAb	ELISA, ICC/IF, IP, WB
GTX29193	Hepatitis B surface antigen antibody	Horse pAb	Dot, ELISA, IHC-Fr, WB
GTX22741	Hepatitis B Virus X Protein antibody [X36C]	Ms mAb	ELISA, IP, WB
GTX41800	Hepatitis B Presurface Antigen (adw) antibody [S 26]	Ms mAb	ELISA, ICC/IF, WB

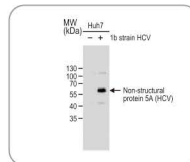
Hepatitis C Virus



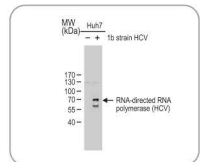
Hepatitis C virus NS2 antibody (GTx131832)



Hepatitis C virus NS3 antibody (GTx131269)



Hepatitis C virus NS5A antibody (GTx131272)

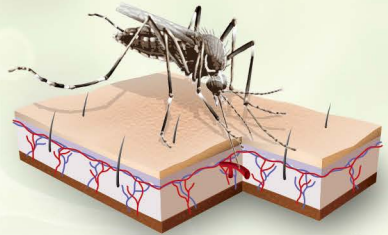
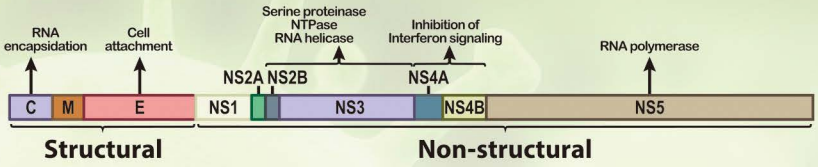


Hepatitis C virus NS5B antibody (GTx131274)

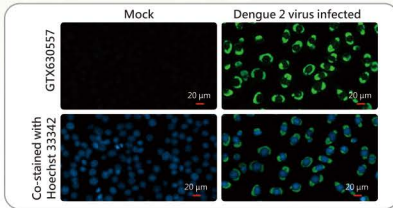
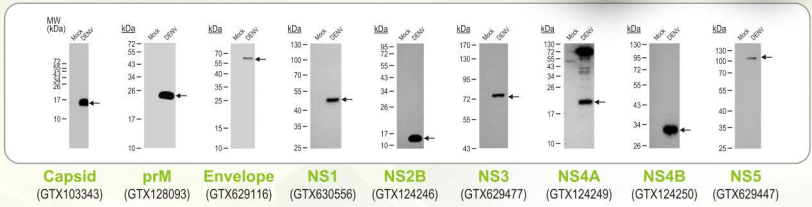
[Citation Support](#)

Cat. No.	Product name	Clonality	Applications
C GTX103353	Hepatitis C virus E2 protein antibody	Rb pAb	Blocking, EM, ELISA-Ag
GTX40702	Hepatitis C virus E1 protein antibody [1879]	Ms mAb	ELISA, ICC/IF, WB
GTX131265	Hepatitis C virus Core protein antibody	Rb pAb	WB
C GTX41722	Hepatitis C virus Core protein antibody [11-B3]	Ms mAb	ELISA, ICC/IF, IHC-Fr, WB
GTX131832	Hepatitis C virus NS2 protein antibody	Rb pAb	WB
GTX131269	Hepatitis C virus NS3 protein antibody	Rb pAb	WB
GTX19052	Hepatitis C virus NS4A protein antibody [497]	Ms mAb	ELISA, WB
GTX131273	Hepatitis C virus NS5B protein antibody	Rb pAb	WB
GTX40324	Hepatitis C virus core + NS3 + NS4 antibody	Gt pAb	Conjugation, ELISA, IHC

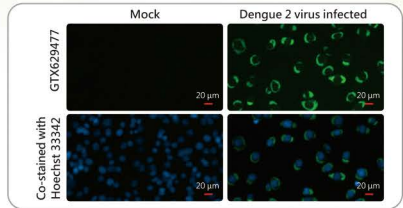
Dengue Virus / West Nile Virus



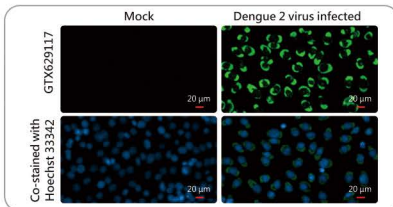
Dengue Virus



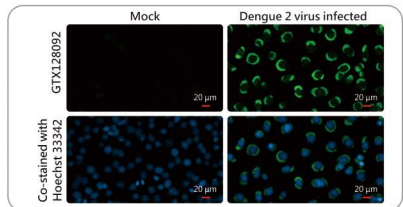
Dengue virus NS1 protein antibody (GTX630557)



Dengue virus NS3 protein antibody (GTX629477)



Dengue virus Envelope protein antibody (GTX629117)



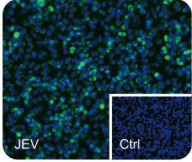
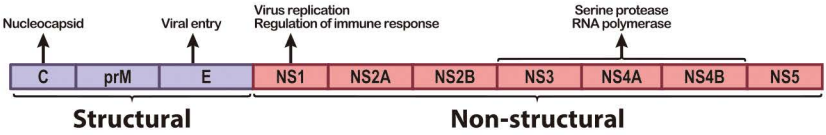
Dengue virus prM protein antibody (GTX128092)

West Nile Virus

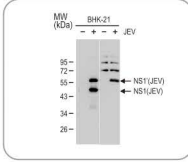
Independent validation

Cat. No.	Product name	Clonality	Applications
✓ GTX131947	West Nile virus Capsid protein C antibody	Rb pAb	WB
✓ GTX131948	West Nile virus PrM protein antibody	Rb pAb	WB
✓ GTX131955	West Nile virus NS3 protein antibody	Rb pAb	WB
✓ GTX131957	West Nile virus NS4A protein antibody	Rb pAb	WB
✓ GTX131961	West Nile virus NS5 protein antibody	Rb pAb	WB
✓ GTX132052	West Nile virus Envelope protein antibody	Rb pAb	WB
✓ GTX132053	West Nile virus NS1 protein antibody	Rb pAb	WB
✓ GTX132060	West Nile virus NS2B protein antibody	Rb pAb	WB

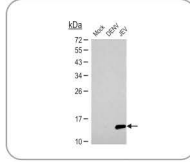
Japanese Encephalitis Virus



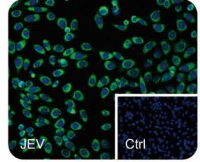
NS1 (JEV) antibody
(GTX131369)



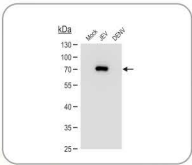
NS1' (JEV) antibody
(GTX132499)



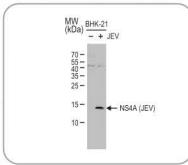
NS2B (JEV) antibody
(GTX125972)



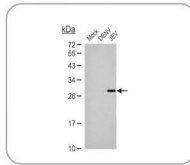
NS3 (JEV) antibody
(GTX125868)



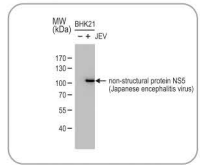
NS3 (JEV) antibody
(GTX125868)



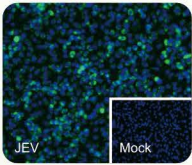
NS4A (JEV) antibody
(GTX132028)



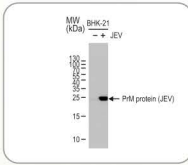
NS4B (JEV) antibody
(GTX125865)



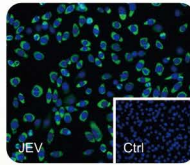
NS5 (JEV) antibody
(GTX131359)



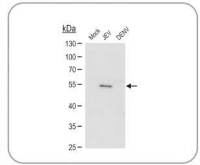
Core protein C (JEV)
antibody (GTX131368)



PrM protein (JEV)
antibody (GTX131833)

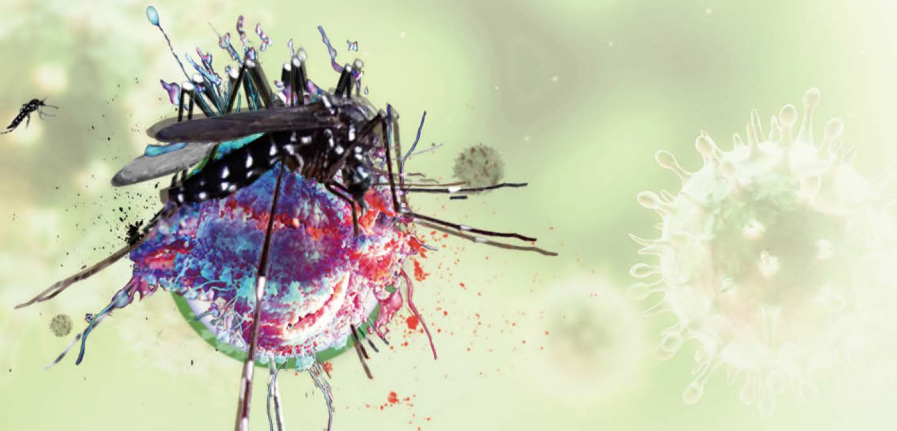


Envelope protein (JEV)
antibody (GTX125867)

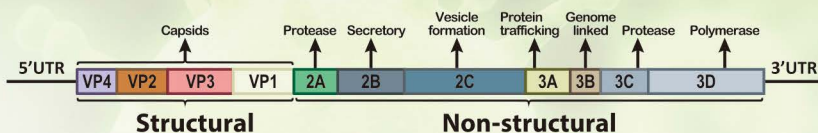


Envelope protein (JEV)
antibody (GTX125867)

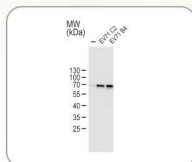
Cat. No.	Product name	Clonality	Applications
GTX131368	Core protein C (JEV) antibody	Rb pAb	ICC/IF, WB
GTX131833	PrM protein (JEV) antibody	Rb pAb	ICC/IF, WB
GTX125867	Envelope protein (JEV) antibody	Rb pAb	ICC/IF, IHC-P, WB
GTX131369	NS1 (JEV) antibody	Rb pAb	ICC/IF, WB
GTX132499	NS1' (JEV) antibody	Rb pAb	ICC/IF, WB
GTX125972	NS2B (JEV) antibody	Rb pAb	ICC/IF, WB
GTX125868	NS3 (JEV) antibody	Rb pAb	ICC/IF, WB
GTX132028	NS4A (JEV) antibody	Rb pAb	WB
GTX125865	NS4B (JEV) antibody	Rb pAb	ICC/IF, WB
GTX131359	NS5 (JEV) antibody	Rb pAb	ICC/IF, WB
GTX131360	NS5 (JEV) antibody	Rb pAb	ICC/IF, WB



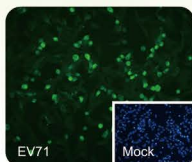
Enterovirus



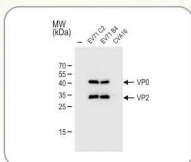
Enterovirus 71



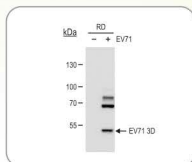
Enterovirus 71 antibody (GTX124261)



Enterovirus 71 VP1 antibody (GTX132338)

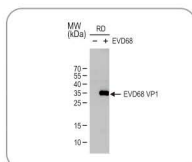


Enterovirus 71 VP2 antibody (GTX132340)

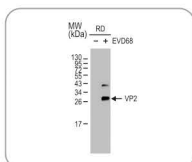


Enterovirus 71 3D antibody [4] (GTX630193)

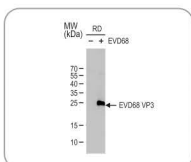
Enterovirus D68



Enterovirus D68 VP1 antibody (GTX132313)

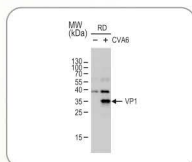


Enterovirus D68 VP2 antibody (GTX132314)

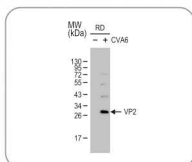


Enterovirus D68 VP3 antibody (GTX132315)

Coxsackievirus A6



Coxsackievirus A6 VP1 antibody (GTX132346)



Coxsackievirus A6 VP2 antibody (GTX132347)



www.genetex.com



International

Tel 886.3.6208988
 Fax 886.3.6209098
 Address 6F-2, No.89, Dongmei Rd., Hsinchu 300, Taiwan (R.O.C.)
 E-mail international@genetex.com

USA

Toll-free 1.877.GeneTex(1.877.436.3839)
 Fax 1.949.309.2888
 Address 2456 Alton Parkway, Irvine, CA 92606 USA
 E-mail info@genetex.com

PD-V001-160519