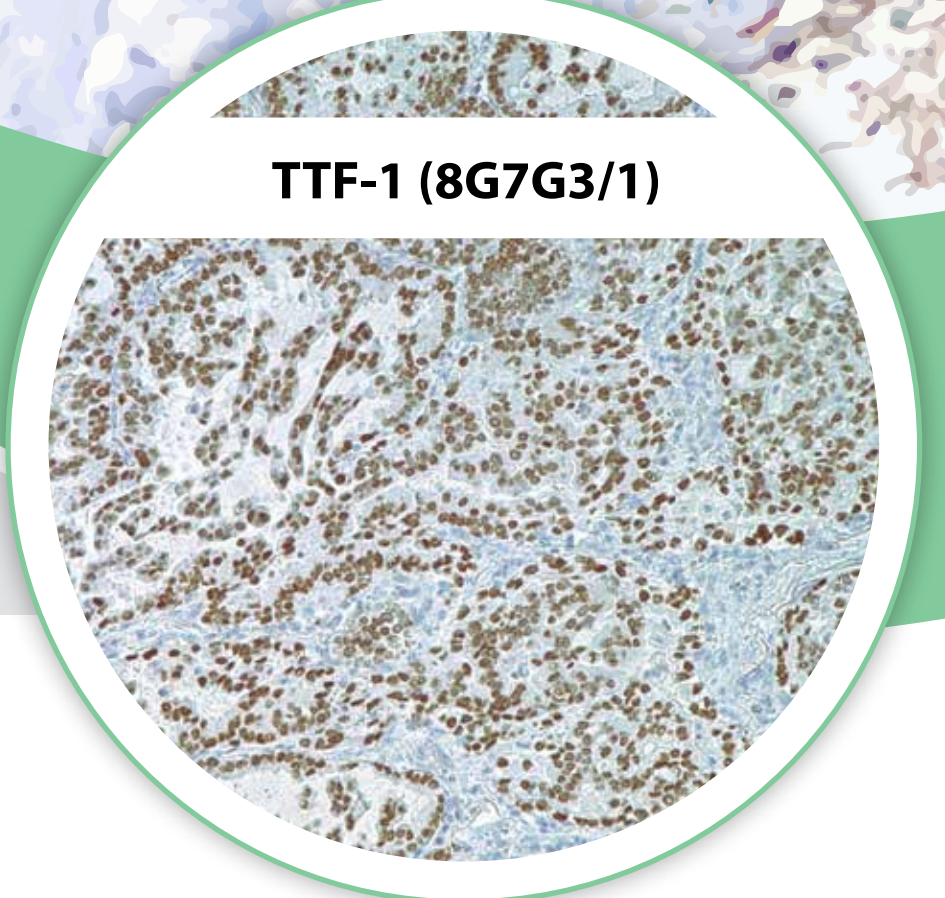


# Carcinomas

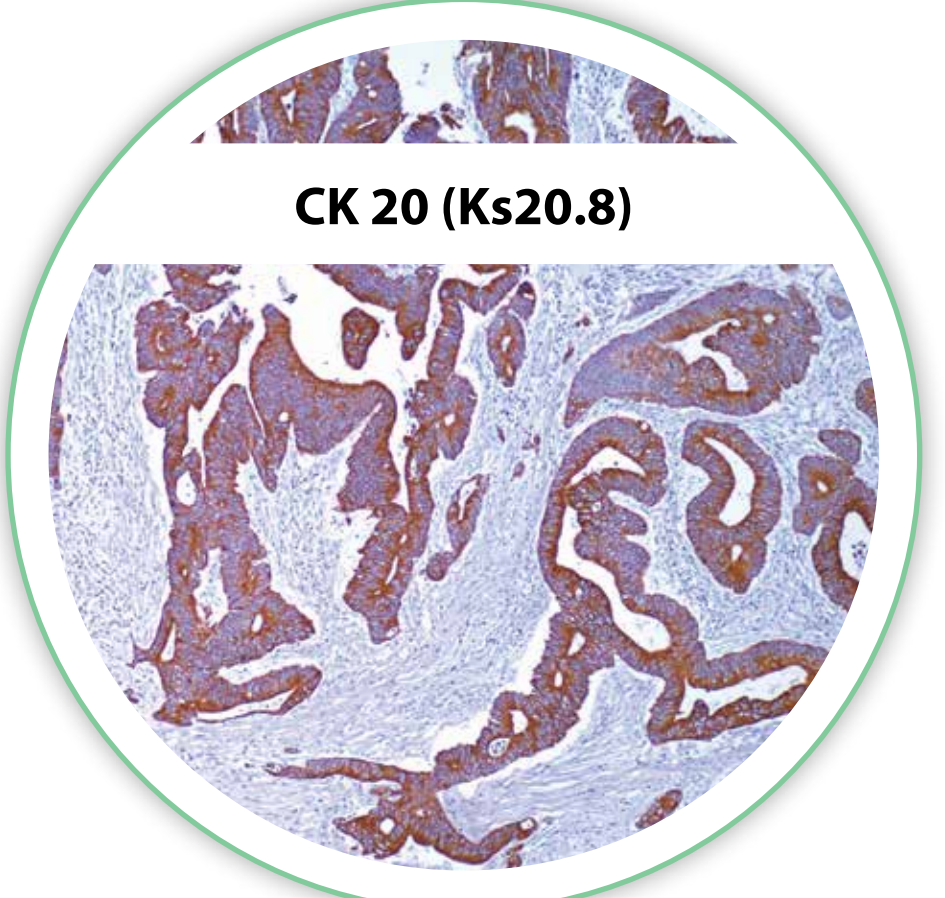
Carcinomas are derived from epithelial tissues from many different sites throughout the body including, but not limited to: respiratory tract, GI tract, head and neck, biliary tract, liver, genitourinary tract, reproductive tract, skin, and breast. The varied morphology and differentiation of carcinomas present diagnostic challenges when found in the primary organ, and most especially in biopsied metastatic sites. This collection of tables represents an effort to tabulate useful information regarding the general reactivities of the specified antibodies in the respective carcinomas as listed. It must be kept in mind that these tables are in no way a substitute for knowledge of the literature with respect to a particular clone or polyclonal product; these tables represent results of a collation of the literature available to us at the time of preparation. Individual results within laboratories may vary somewhat as techniques and protocols are pertinent variables. It is the hope of Cell Marque that pathologists and laboratorians, in general, will find these useful in daily pathology practice when it comes to making differential diagnosis.

*Mike Lacy, M.D.*



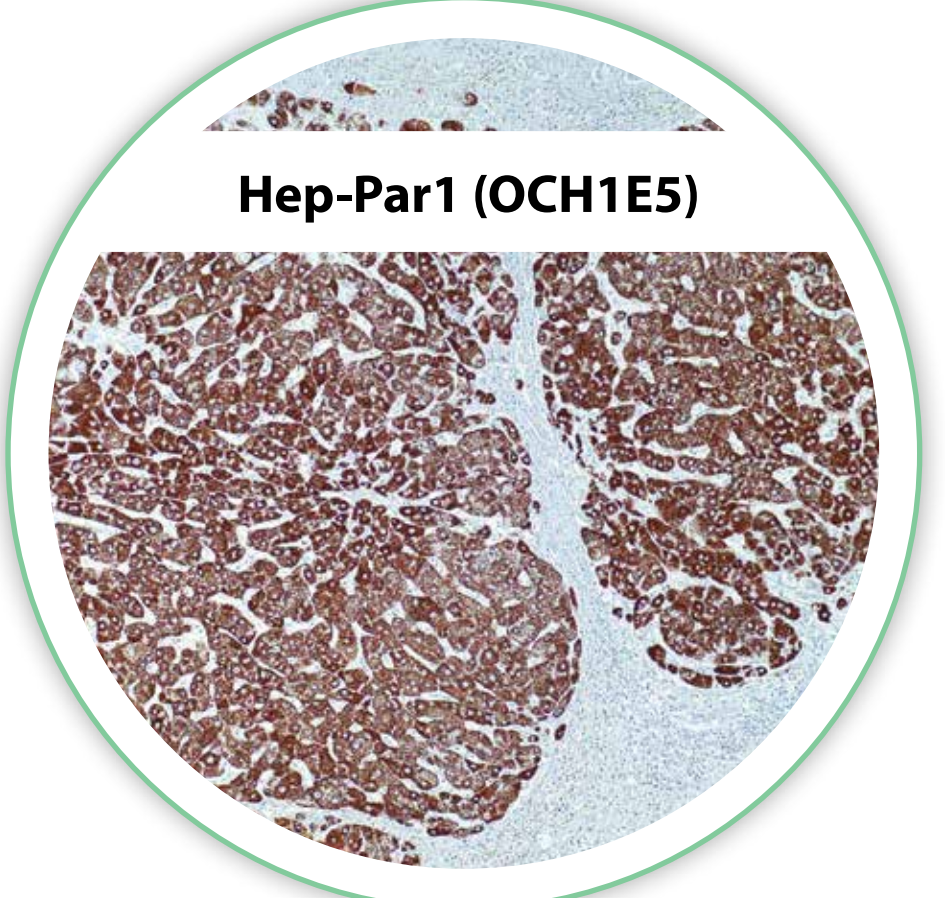
**TTF-1 (8G7G3/1)**

Papillary Thyroid Carcinoma



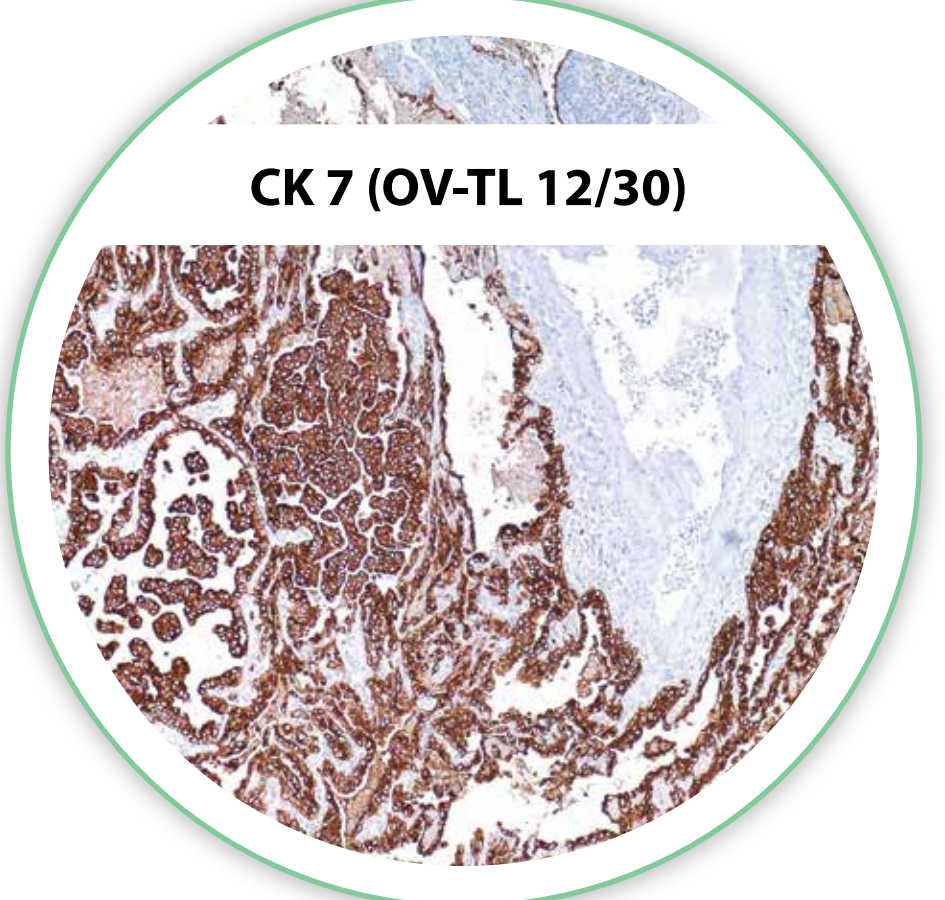
**CK 20 (Ks20.8)**

Colorectal Adenocarcinoma



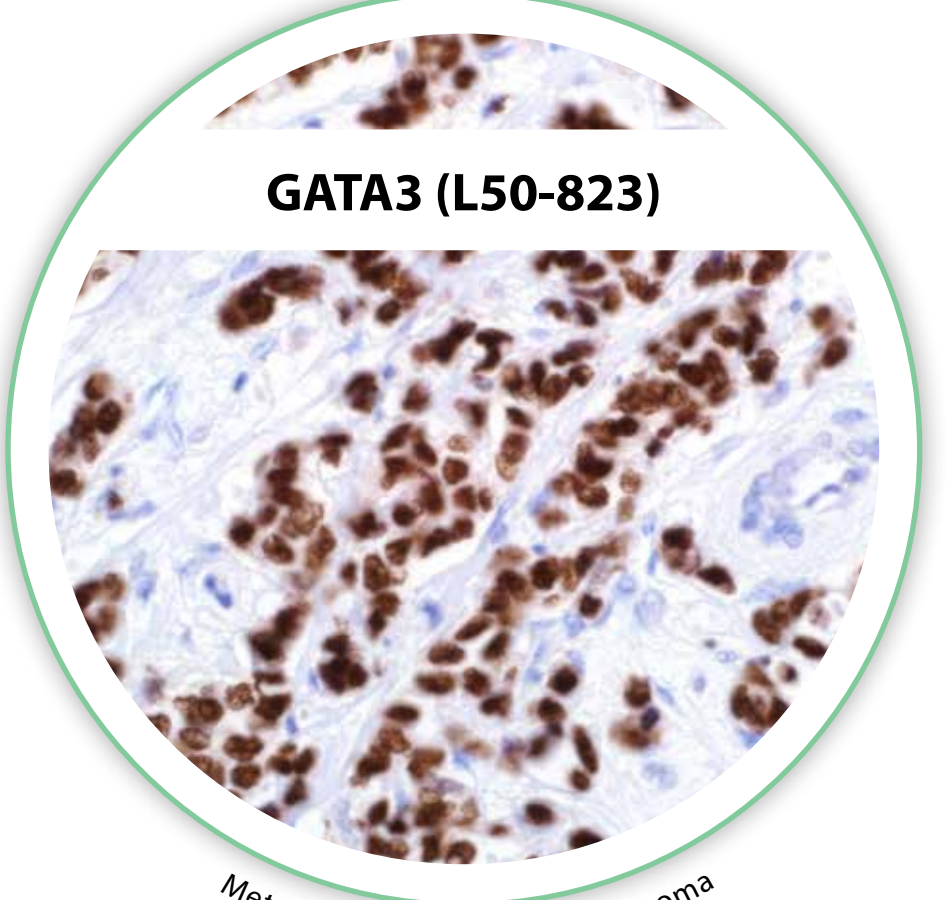
**Hep-Par1 (OCH1E5)**

Hepatocellular Carcinoma



**CK 7 (OV-TL 12/30)**

Lung Adenocarcinoma



**GATA3 (L50-823)**

Metastatic Breast Ductal Carcinoma

Carcinomas	CK Cocktail	CK7	CK20	AE1	AE3	CK5	p63	Vimentin	TTF-1	Thyroglobulin	GCDFP-15	ER/PR	CEA (polyclonal)	CDX-2	Villin	Hep-Par1	RCC	CD10	Beta-Catenin	GATA3	ERG
Breast Carcinoma	+	+	-	+	+	-	-	-	-	-	+	+/	-	-	-	-	-	-	-	+	-
Colorectal Adenocarcinoma	+	-	+	+	-	-	-	-	-	-	-	-	+	+	+	-	-	+	+	-	-
Lung Adenocarcinoma	+	+	-	+	+	-	-	-	+	-	-	-	+	-	-	-	-	-	-	-	-
Prostatic Adenocarcinoma	+	-	-	+	-	-	-	-	-	-	-	-	-	-	-	-	-	+	-	-	-
Hepatocellular Carcinoma	-	-	-	-	-	-	-	-	+	-	-	-	+	-	-	+	-	+	-	-	+
Renal Cell Carcinoma	+	-	-	+	-	-	-	+	-	-	-	-	-	-	-	-	+	+	-	-	-
Thyroid Carcinoma	+	+	-	+	-	-	-	+	+	+	-	-	-	-	-	-	-	-	-	-	-
Pancreatic Carcinoma	+	+	-	+	+/	-	-	-	-	-	-	-	+	-	-	-	-	+/	-	-	-
Gastric Carcinoma	+	+	-	-	-	-	-	-	-	-	-	-	+	+	+	-	-	-	-	-	-
Transitional Cell Carcinoma	+	+	+	+	+	+	+	+	-	-	-	-	-	-	-	-	-	+	-	+	-
Squamous Cell Carcinoma	+	-	-	+	+	+	+	-	-	-	-	-	-	-	-	-	-	-	-	-	-
Ovarian Carcinoma, Non Mucinous	+	+	-	+	+	+	-	-	-	-	-	+	-	-	-	-	-	-	-	-	-
Endometrial Adenocarcinoma	+	+	-	+	-	-	-	+	-	-	-	+	-	-	-	-	-	-	-	-	-
Bladder Adenocarcinoma	+	-	+	+	+	-	-	-	-	-	-	-	+	+	-	-	-	+	+	+/	-
Salivary Gland Carcinoma	+	+	-	+	+	+	+	-	-	-	-	-	+	-	-	-	-	-	-	+/	-
Cervical Carcinoma	+	+	-	-	-	-	-	-	-	-	-	-	+	-	-	-	-	-	-	-	-
Sweat Gland Carcinoma	+	+	-	-	-	+	+	-	-	-	-	-	+	-	-	-	-	-	-	-	+/

Colonic vs. Ovarian Carcinoma	CK7	CK20	CEA	CDX-2	Villin	CA19-9	Ber-EP4	WT1	CA-125	CK5/6	PAX-8
Ovarian Carcinoma, Serous	+	-	+	-	+	+	+	+	+	-	+
Ovarian Carcinoma, Mucinous	+/	+/	-	+	+	+	+	-	-	-	-
Ovarian Carcinoma, Endometrioid	+	-	-	-	-	+/	+	-	+	-	+
Colonic Carcinoma	-	+	+	+	+	+	+	-	-	-	-

Ampullary Carcinoma: Enteric vs. Ductal	CK17	Hep-Par1	CDX-2
Enteric	-	+	-
Ductal	+	-	+/

Carcinomas	CK7	CK20	CDX-2	Villin	TTF-1	Napsin A	PSA/PSAP	Mammaglobin	GCDFP-15	GATA3
Breast Carcinoma	+	-	-	-	-	-	-	+	+	+
Lung Adenocarcinoma	+	-	-	-	+	+	-	-	-	-
Transitional Cell (Bladder) Carcinoma	+	+	-	-	-	-	-	-	-	+
Colorectal Adenocarcinoma	-	+	+	+	-	-	-	-	-	-
Prostatic Adenocarcinoma	-	-	-	-	-	-	+	-	-	-

Carcinoma: Salivary Ductal vs. Breast vs. Prostate	Androgen Receptor	BCA-225	GCDFP-15	ER/PR	Mammaglobin	Ny-BR-1	PSA/PSAP	CD44	GATA3	ERG
Salivary Duct Carcinoma	+	+	+	-	-	-	-	-	+/	-
Breast Carcinoma	+	(apoptine)	+	+	+/	+	-	+	+	-
Prostate Carcinoma	+	-	-	-	-	-	+	+	-	+

Genitourinary Tract	PSA/PSAP	PS04s	CK34BE12	p63	CK7	Thrombomodulin	Uroplakin III	PAX-2	GATA3	ERG
Prostate Carcinoma	+	+	-	-	-	-	-	-	-	+
Urothelial Carcinoma	-	-	+	+	+	+	+	-	+	-
Nephrogenic Adenoma	-	+	+/	-	+	-	-	+	+/	-

Squamous vs. Transitional Carcinoma	CK34BE12	p63	CK5	Thrombomodulin	CK7	CK20	Uroplakin III	CDX-2	CK14
Squamous Cell Carcinoma	+	+	+	+	-	-	-	-	+
Transitional Cell Carcinoma	+	+	-	+	+	+	+	+	-

Lung Carcinomas	CD56	Chromogranin A	Synaptophysin	CK7	Napsin A	p63	TTF-1	B68	GLUT1
Small Cell Carcinoma	+	-	+/	-	-	-	+	+	-
Adenocarcinoma	-	-	-	+	+	-	+	+	+/
Squamous Cell Carcinoma	-	-	-	-	-	+	-	+	+
Large Cell Neuroendocrine Carcinoma	+	+	+	+/	-	-	+/	-	-

Lung Small Cell Carcinoma vs. Merkel Cell Carcinoma	TTF-1	CEA	CK20	Chromogranin A	E-cadherin	Neurofilament	CD117	Synaptophysin
Merkel Cell Carcinoma	-	-	+	+	+	+	+	+
Lung Small Cell Carcinoma	+	-	-	-	-	-	+/	+

Mucin Expression in Neoplasms	MUC1	MUC2	MUC5AC	MUC6
Pancreatic Adenocarcinoma	+	-	+	-
Lung Carcinoma, Signet Ring	+	-	+	-
Ovarian Adenocarcinoma	+	-	+	-
Gastric Carcinoma	-	-	+	-
Cervical Adenocarcinoma	+	-	+	-
Esophageal Carcinoma	+	-	+	-
Paget's Extramammary	+	-	+	-
Cholangiocarcinoma	+	-	+/	-
Salivary Duct Adenocarcinoma	-	+	-	+
Colon Carcinoma, Signet Ring	-	+	-	-
Prostate Carcinoma	-	+/	-	-
Pancreatic Intraductal Papillary Carcinoma	-	+	+	+
HCC	-	-	-	-
Adrenocortical Carcinoma	-	-	-	-
Breast Carcinoma	+	-	-	-
Lung Carcinoma	+	-	-	-
Kidney Carcinoma	+	-	-	-
Bladder Carcinoma	+	-	-	-
Endometrial Carcinoma	+	-	-	-
Ovarian Carcinoma, Mucinous	+	-	+	-
Renal Cell Carcinoma	+	-	-	-
Urothelial Carcinoma	+	-	-	-
Appendiceal Adenocarcinoma	-	+	+	-
Barrett's Esophagus	+	+	+	-
Pancreatic Mucinous Cystic	-	-	+	-
Breast Colloid Carcinoma	+	+	-	+

Mucins Expression in Organs	MUC1	MUC2	MUC4	MUC5AC	MUC6
Stomach	+	-	+	+	+
Small Intestine	-	+	-	-	+
Colon	-	+	-	-	-
Pancreas	+	-	-	-	+

Cutaneous Neoplasm	CD10	Androgen Receptor	CK20	CD34	Ber-EP4	CK19
Basal Cell Carcinoma	+	+	-	-	+	+
Trichoepithelioma	-	-	-	+	+	+
Merkel Cell Carcinoma	-	-	+	-	+	+
Microcystic Adnexal Carcinoma	+/	-	-	-	-	+/
Sebaceous Carcinoma	+/	+	-	-	+	-
Sebaceous Adenoma	-	+	-	-	+	-

Colon vs. Prostate Adenocarcinoma	CDX-2	CK20	CEA	CA19-9	PSA	PS04s	ERG
Colon Adenocarcinoma	+	+	+	+	-	-	-
Prostate Adenocarcinoma	-	-	-	-	+	+	+

Cell Marque strives to be complete and accurate in the presentation of this information; however, Cell Marque, its shareholders, its officers, its employees, and its business associates assume no liability for any reliance on any of the contents of this poster including but not limited to any of the antibody panels without regard to whether or not these are accurate and/or complete. Furthermore, Cell Marque assumes no liability for any omissions. It is the sole responsibility of laboratories to independently validate the application and proper use of any product(s) and/or protocol(s). Cell Marque reserves the right to make any changes, additions, and/or deletions to its product offerings at any time without notice. The antibody panels were constructed based on Cell Marque's internal investigations with scores based on the percentage of positivity represented as follows: "-" for 0-40%, "+/-" for 40-50%, "+/+" for 50-60%, "+" for 60-100%, and blank for no available data.

©2015 Sigma-Aldrich Co. LLC. All rights reserved. SIGMA-ALDRICH and Cell Marque are trademarks of Sigma-Aldrich Co.



The HiDef Detection™ HRP and Alk Phos Polymer Systems are high-sensitivity visualization systems that are ready-to-use for immunohistochemical protocols. This two-step system uses an indirect method resulting in an antibody-enzyme complex that universally detects mouse and rabbit primary antibodies. HiDef Detection™ is biotin-free and eliminates nonspecific staining that could result from any endogenous biotin.

**Higher sensitivity, faster protocols, and lower prices!**